

WATCH DOCK

USER GUIDE

GENERAL INFORMATION

WATCH DOCK

HIGH TECHNOLOGY DEMAGNETIZER

The exposure of your watch to magnetic fields may interfere with its normal operation, whether you own a mechanical, automatic or quartz model. Although these fields are not damaging to your timepiece, their influence can affect its accuracy or even stop the watch completely. The major effects of magnetism on a watch are quite clear. Under the influence of a low-intensity magnetic field, a slight disturbance of the watch's normal functioning may be noticed.

However, a strong magnetic field may have an effect on the movement of a mechanical watch and alter the normal functioning of the balance spring. Steel components are even more sensitive to magnetism and create magnetic fields inside the movement. The watch's functioning could then undergo significant interference, or even stop completely in the magnetic field.

An operation called "demagnetization", which involves no risk to your watch, will be undertaken. In the majority of cases, the setting of the movement and the width of the balance will return to normal after this operation. Lepsi designed the Watch Dock, it allows you to demagnetize your watch easily in just a few seconds.

PACKAGE CONTENT

- One Watch Dock
- One hexagonal key
- One shunt

INSTRUCTIONS



CONTROL AND DEMAGNETIZE YOUR WATCH

- Put your watch on the Watch Dock
- Press the button

THE BUTTON FLACHES GREEN

The Watch Dock will detect the magnetic fields of your watch. He will demagnetize it only if it is necessary.

THE BUTTON FLACHES RED

In case your watch generates a magnetic field, the Watch Dock will automatically demagnetize your watch

DEMAGNETIZE YOUR WATCH (without detection of the magnetic fields)

- Put your watch on the Watch Dock
- Press the button twice, slowly

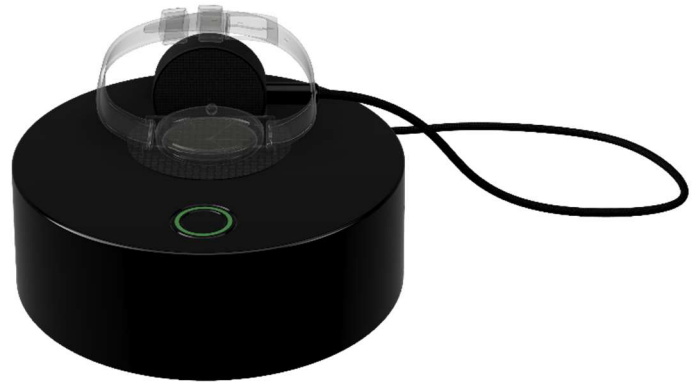
THE BUTTON FLACHES RED during the demagnetization process

AT THE END OF THE PROCESS THE WATCH DOCK TURNS OFF AUTOMATICALLY

DOCK + SCOPE

You can control the chronometry of your watch while demagnetizing it. For the use of the Watch Scope you can refer to the user guide of this one. (The watch scope is sold separately)

- Put the Watch Scope in the slot
- Put the watch in touch with the Watch Scope



BATTERY

Your watch scope is equipped with 4 LR3 AAA 1.5v batteries. Their lifespan is around 300 demagnetization cycle. When the batteries are worn, the button flashes **ORANGE**, it's time to replace them. Here's how to do it:

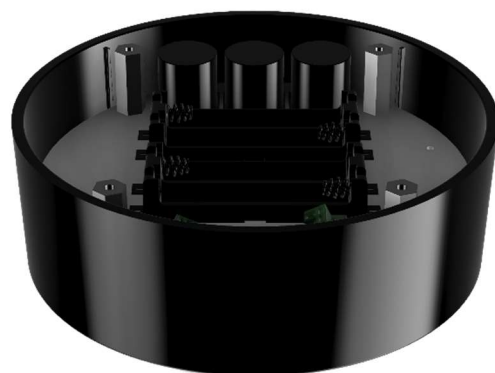
- 1 -

remove the 4 screws
with the key provided



- 2 -

Insert the 4 LR3
AAA batteries



FEATURES

CONNECTIVITY

Simple, Reliable, Universal: wireless,
battery LR3/AAA x4 powered

WEIGHT AND DIMENSIONS

Diameter 120mm - Height 40 mm - Weight 500 g

COMPATIBILITY

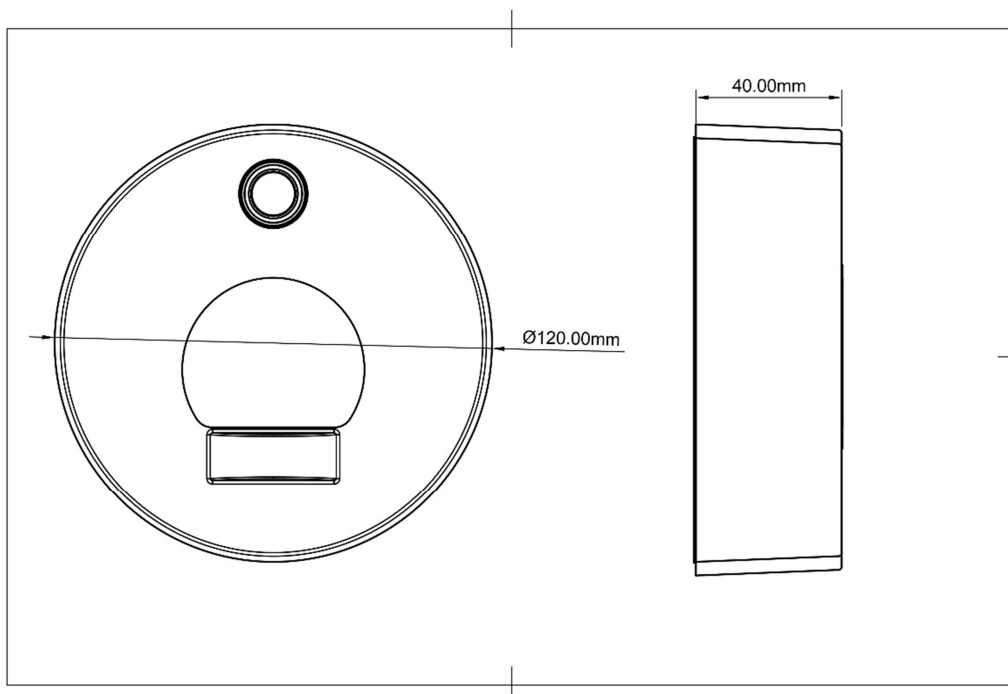
All mechanical watches

MATERIELS AND MANUFACTURING

ABS body, electronics 100% SWISSMADE

WARRANTY

3 years



WARRANTY

MANUFACTURER'S WARRANTY

Watch Scope is guaranteed for 3 years after the purchase date against all manufacturing defects. The warranty is only valid upon presentation of proof of purchase or a valid receipt.

WARRANTY RESTRICTIONS

Damages due to normal wear and tear such as scuffs, scratches, marks, cuts, colour fading, etc. are not covered by the warranty. Damages caused by misuse or improper use of the product such as mishandling, shock, breakage, etc. are not covered by the warranty. Damages caused by using the product in poor environment conditions such as humid places, exposure to water, to vibrations or to sources of high heat, etc. will not be covered by the warranty.

LIABILITY

LEPSI may in no case be held responsible for harm caused by misuse of the Watch Scope measurement system or for damage caused to watches, goods or people.



WATCH DOCK 
MODEL DMZ V3.0



This device complies with part 15 of the FCC Rules. Operation is subject to the following two conditions: (1) This device may not cause harmful interference, and (2) this device must accept any interference received, including interference that may cause undesired operation.