



BERGEON

SWISS • MANUFACTURE • 1791

NOVELTIES 2025



TOOLS & EQUIPMENT MADE FOR WATCHMAKING & MICROTECHNOLOGY

Technical specifications :

- Number of winding revolutions: 0 to 4 million revolutions (adjustable to 1/100 turn)
- Torque control: 4 à 60 mNm
- Rotation speed: 0.5 to 250 rpm
- 5" colour touch screen
- Multilingual display FR / ALL / ANG / ESP / IT / PT
- Simple editing of basic variables (speed, number of revolutions, torque limit, direction of rotation)
- 100 memory of parameter sets
- Acceptance criteria for production use: minimum torque, minimum revolutions
- Cyclic mode (for wear tests)
- Optional 2-level password protection for settings
- Power supply: 5 V, max 1.2A. Compatible with standard 10W and higher chargers
- Connections: 2x USB-C (USB1=power + data, USB2=power), supplied with 1 USB-C/USB-A cable

7047-EXP TIME RUNNER EXPERT

Winding machine for mechanical and automatic watches

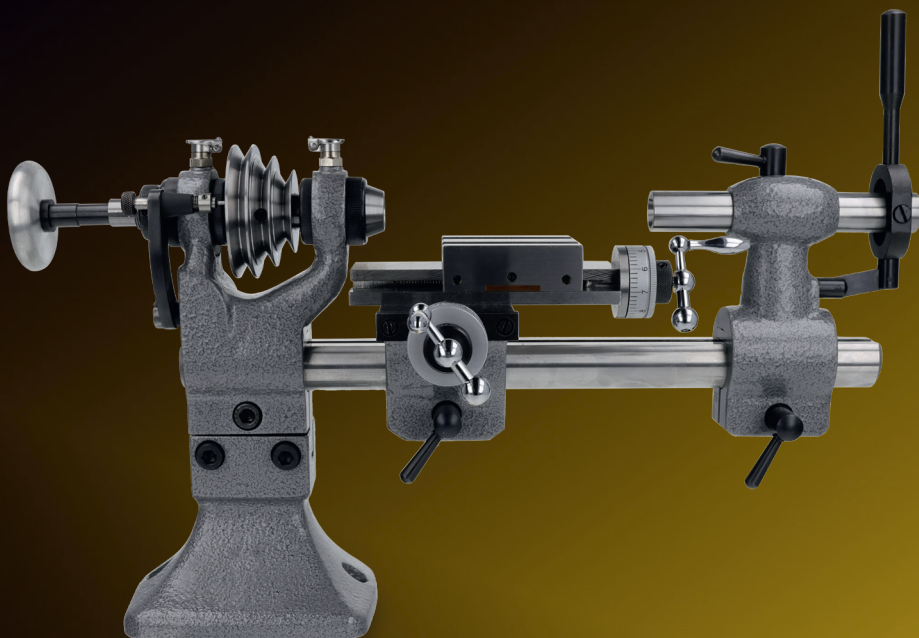
The new device for winding watches by means of the crown makes it possible to control the winding, date jumping and time setting functions both on movements with working stems and on finished watches. The device can be set up very easily on the touch screen. The height and lateral adjustment of the table provide excellent stability. Choice of displays, for example rpm/torque graph, detailed measurements including energy supplied, PASS/FAIL, history of last actions.



7047-SET SET OF 5 INTERCHANGEABLE TIPS

Thanks to their silicone tube, these tips enable the crown to be encircled. They are ideal for winding, date changes, etc.

- Diameters from 3.5 to 8.5 mm



WATCHMAKER'S LATHE

The fruit of collaboration between **BERGEON** and German manufacturer **Vector Technik**, this watchmaking lathe has been specifically adapted to meet watchmaking standards. Supplied in a solid wooden case with a complete set of collets and accessories, it offers a reliable and robust solution for turning, milling or drilling operations on watch components.



Technical specifications :

- Set of 48 collets (Ø range 0.3 - 8.0 mm)
- Spindle headstock with belt drive
- Tailstock with tip and needle holder
- Grinding spindle
- Workpiece chucks (for grinding wheel, saw blade, milling cutter)
- Stable base for the machine
- Folding support with narrow and wide base, filing roller, sawing plate
- 3 lacquered brass discs with collets
- Grinding wheel with spacer ring
- Welding plate for belt
- Wooden case with compartments for optimum and protection

5700-Z-BD

DEVICE WITH TORQUE SPINDLE FOR CLOSING WATERPROOF WATCH CASES

The new version of the **5700** device is fitted with a torque spindle for safe, precise screwing of watch case backs. Equipped with a very stable base, the new device allows the screwing operation to be carried out in complete safety.

- Unidirectional torque release (clockwise).
- Tightening power: 1 to 5 Nm.

Supplied with:

- 1 superior vice, opening up to Ø 60 mm, N° 5700-04-G.
- 6 pairs of chucks, N° 2835-A, -B -C, -D, -E and -F.
- 4 pairs of reversible caseholder dies (lug widths: 9/11, 13/15, 17/19 and 20/22 mm), N° 5700-B, -C, -D and -E.





15700-CO **ASSORTMENT OF 8 SUCTION DIES**

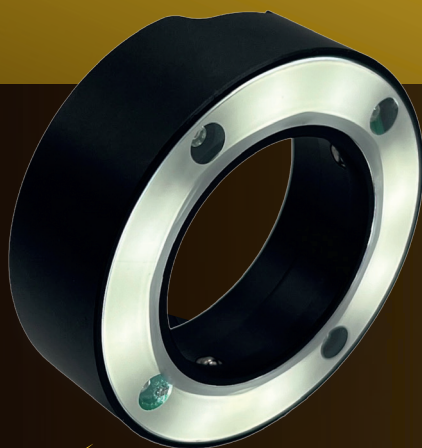
Compatible with all 5700-... devices, this high-grip suction pads make it easy to open and close screwed case-backs. The flexible material deforms slightly and adapts to the shape of the case.

- Dies and subbase in aluminium
- Soft adiprene suction pad
- With Ø 70 mm subbase and handle
- On a POM base (204 x 121 x 15 mm).
- Ø 16, 20, 23, 26, 30, 34, 40, 45 mm

6006 MACRO MAGNIFYING 6x

Magnifier with 6x magnification, without aberration or distortion. With 5 Ø 33 mm lenses for exceptional optical quality and clarity.

- Dimension : 44 x 41 mm
- Supplied in a case with a microfibre cloth



6006-LED CIRCLE LIGHT (WHITE & UV LED)

The «Circle Light» is equipped with 8 white LED lights (4100K), providing bright and uniform lighting, as well as 4 ultraviolet lights (365-370 nm), to test the luminescence of your watches in all conditions. This versatile lighting allows you to examine the most subtle details, from the hands to the indices and even the bezel.

- Delivered in a case, with USB-C cable

7913-L LIGHTWEIGHT WATCHMAKER EYE GLASS WITH CLIP

A lighter, redesigned version of our classic model, the **7913-L** combines comfort and robustness thanks to the use of high-quality materials: synthetic material for the structure, stainless steel and nickel-plated brass for the metal parts, all heat-sheathed for added protection.

- Acrylic lens, Ø 23.5 mm



	6.7x	5x	4x	3.3x	2.8x	2.5x
N°	1.5	2	2.5	3	3.5	4

11582 OIL-CUP WITH ABSORBENT FOAM FOR OIL CUPS STAND

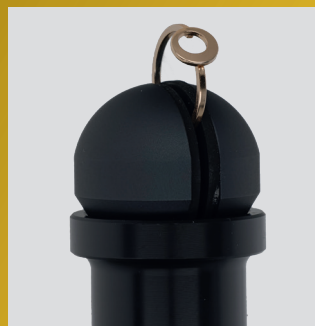


As natural elderberry is protected and difficult to obtain, **BERGEON** offers a synthetic alternative. It comes in a small plastic cup that can be inserted into your **BERGEON 30180** oil cups stand.

15895 RING CLAMP FOR JEWELLERS AND STONE SETTERS

Ring clamp made of anodised aluminium, ideal for precision work in jewellery, gem-setting and watchmaking. Handle made of POM for a better grip, replaceable rubber jaws to protect delicate workpieces.

- Opening from 0 to 10 mm





B
BERGEON
SWISS · MANUFACTURE · 1791

BERGEON SA | Allée des Défricheurs 4a | CH-2300 La Chaux-de-Fonds | +41 32 933 60 00 | info@bergeon.ch | www.bergeon.ch

TOOLS & EQUIPMENT MADE FOR WATCHMAKING & MICROTECHNOLOGY

2025/05